

## CPTH02 delivery management AT12 series



---

The CPTH02 computing head associated with the local serial communication interface 232/TTL (ICL) CPT43006 allows to enable a refueling sequence and save the delivery data.

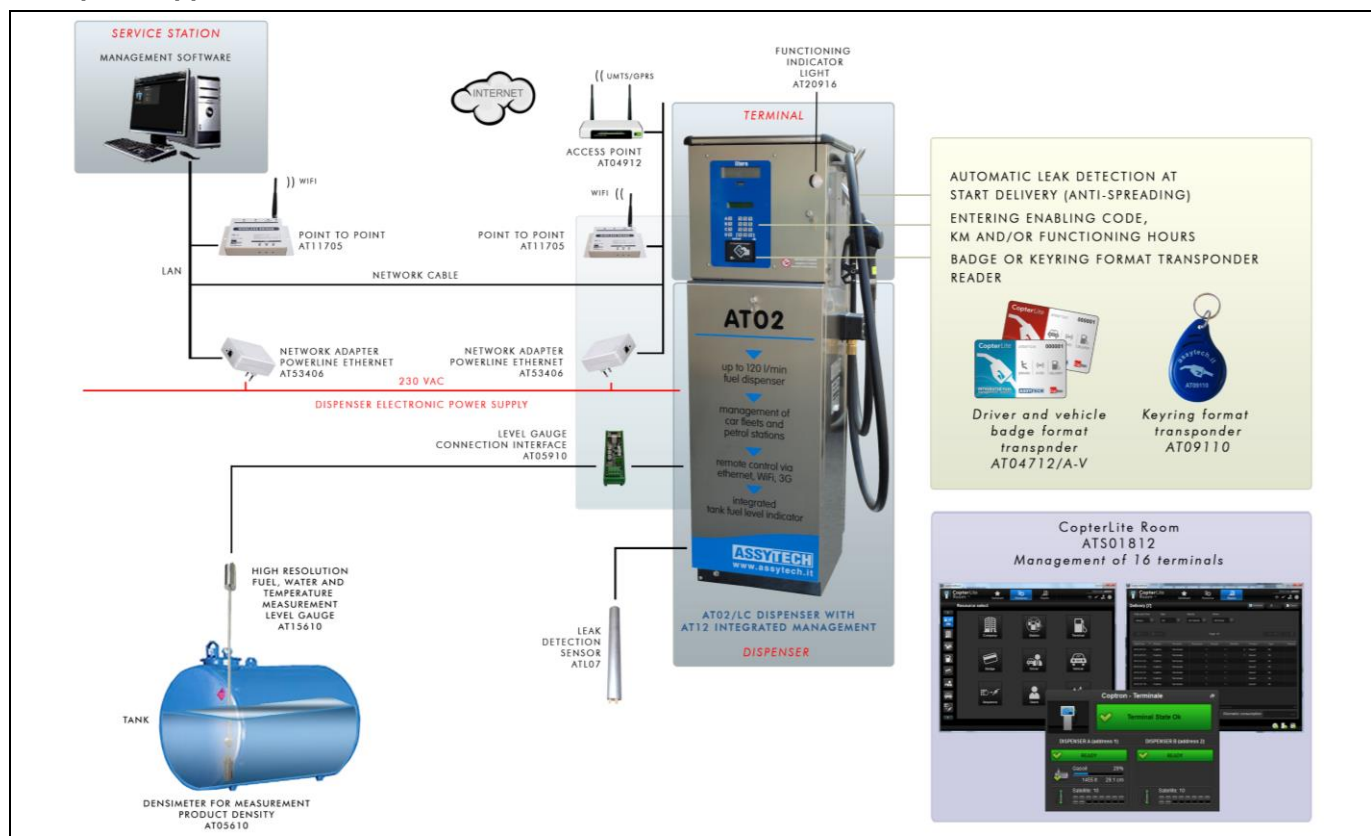
In this configuration, called AT12, it manages the connected peripherals on its own and transfers the data on the LAN network.

The ICL interface is part of the metrological approval of the header (DM 30/10/2006 n ° 27252).

## Technical characteristics

• Power supply	230 VAC +10% -15% - 50/60 Hz (130 VAC +10% -15% - 50/60 Hz on request)
• Consumption with backlit LED system	30 VA + load (max 100 VA)
• Operating temperature (OIML R117-1)	-25°C ÷ +55°C
• Storage temperature	-40°C ÷ +85°C
• Measurement unit resolution	Centilitres
• Motor relay control output	24 VDC 0,5 mA
• Predetermination solenoid valve output	24 VDC 0,5 A (modulated PWM)
• Red/green light output	15 VDC 0,1 A
• Relay contact for pump and solenoid valve activation	24 VAC 1 A (optional)
• Pulse emitter input	2 channels
• Predetermination (optional)	Volume by keyboard or Host
• Low level input	Low level contact or connection to tank level systems
• Spare contact input	Programmable according to the type of dispenser
• Local serial connection	RS232/RS485 One-Wire
• Delivery data viewing	1 display LCD backlit LED 6 digits high 25 mm
• System data viewing	1 display LCD 20 characters X 2 lines
• User keyboard	In vandal-proof 16-key metal

## Example of application



## Codes

AT12* / OPERATOR PANEL	/READER
/0: absent	/0: without reader (enter codes)
/1: with display, keyboard and reader	/4: with H.F. transponder badge or keyring format

(\* ) AT12N for installation in AT15 dispenser

Specification subject to change without notice